



Developers:  
**VIHAV PROPERTIES**

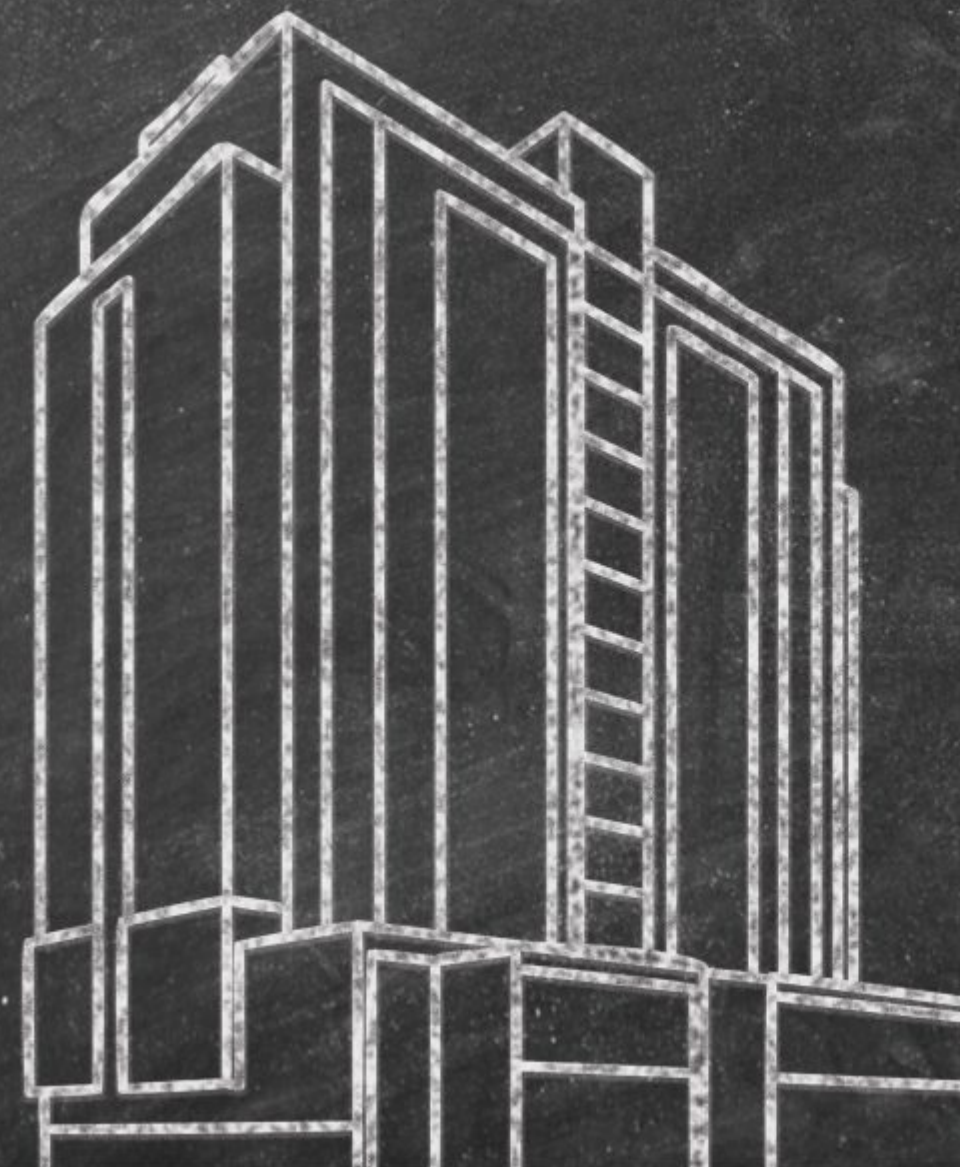
Site: Supremus, Near Iscon Heights,  
Gotri, Vadodara-390021.

+91 7201 851 851  
supremus@vihav.com  
www.vihav.com

Architect : Placekines  
Structure : Vyom Consultants  
MEP Consultant : Vraj Sanitation



A **WELL-ENGINEERED**  
BUSINESS TOWER







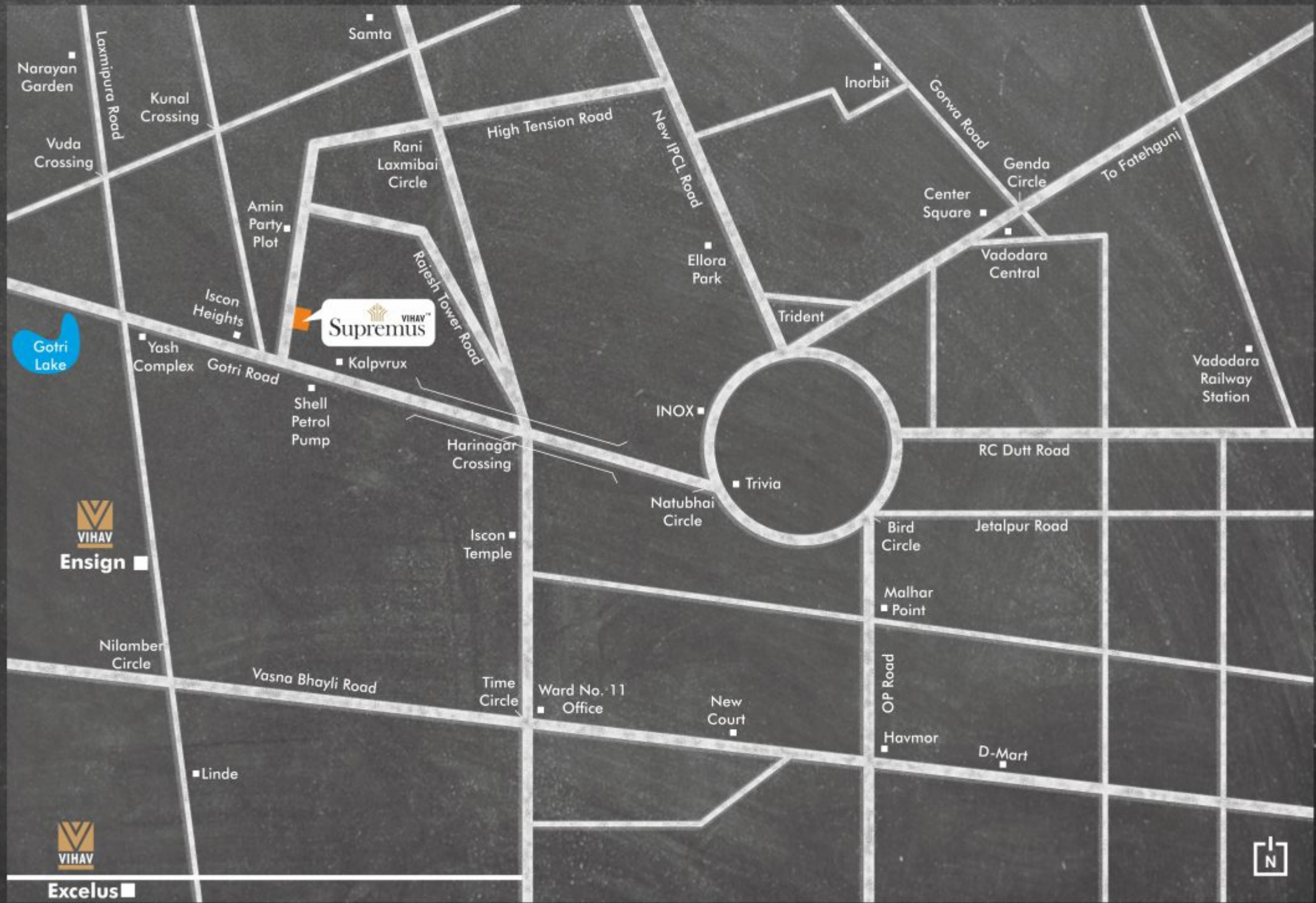




## LOCATION PLAN

The leisurely lifestyle that Vadodara is known for, combined with its smart architectural experience, Vihav is creating a wave of pleasure and peace with its new creation Vihav Supremus. This will home the opportunity for the people who have been wandering around places for their creativity and focus to nurture their dream business. The warmth and the love by Vihav Supremus will ensure the relaxed lifestyle of Barodian.

- PROXIMITY :**
- NATUBHAI CIRCLE : 1.5 KM
  - GENDA CIRCLE : 3.5 KM
  - NILAMBER CIRCLE : 2 KM
  - RAILWAY STATION : 5.5 KM
  - NEW COURT : 4 KM







VALUE ADDITIONS



Ample parking facility on ground floor and two level basement



Security & surveillance through CCTV



Gym & conference room at 14th level



2 nos. of highspeed passenger elevators and a goods / service elevator starting from basement level 2.



Built-in pantry and executive wash room in each unit



Grand Double height air conditioned entrance lobby, design for collaboration and networking



DG power backup for common utility





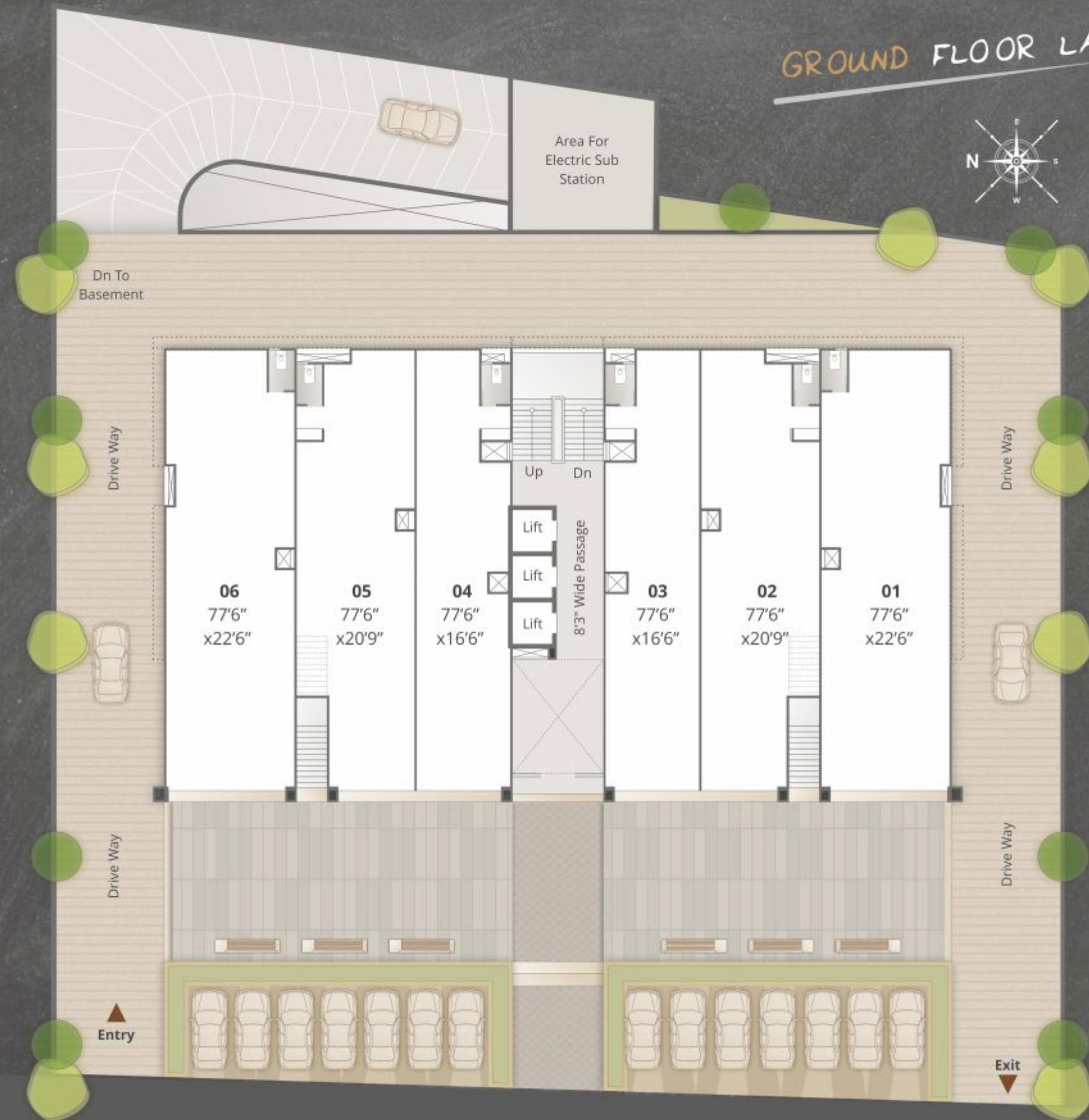
## WHY WE CALL IT **WELL-ENGINEERED** ???

Vihav Supremus offers a unique, bespoke charm to a property that most places struggle to achieve. There is something incomparably special about the project transforming the idea for the contemporary business place, using the history of the most posed area. Gotri has become the most sought after locality. Vihav Supremus have preserved a little slice of architectural history with its new ideation and features.

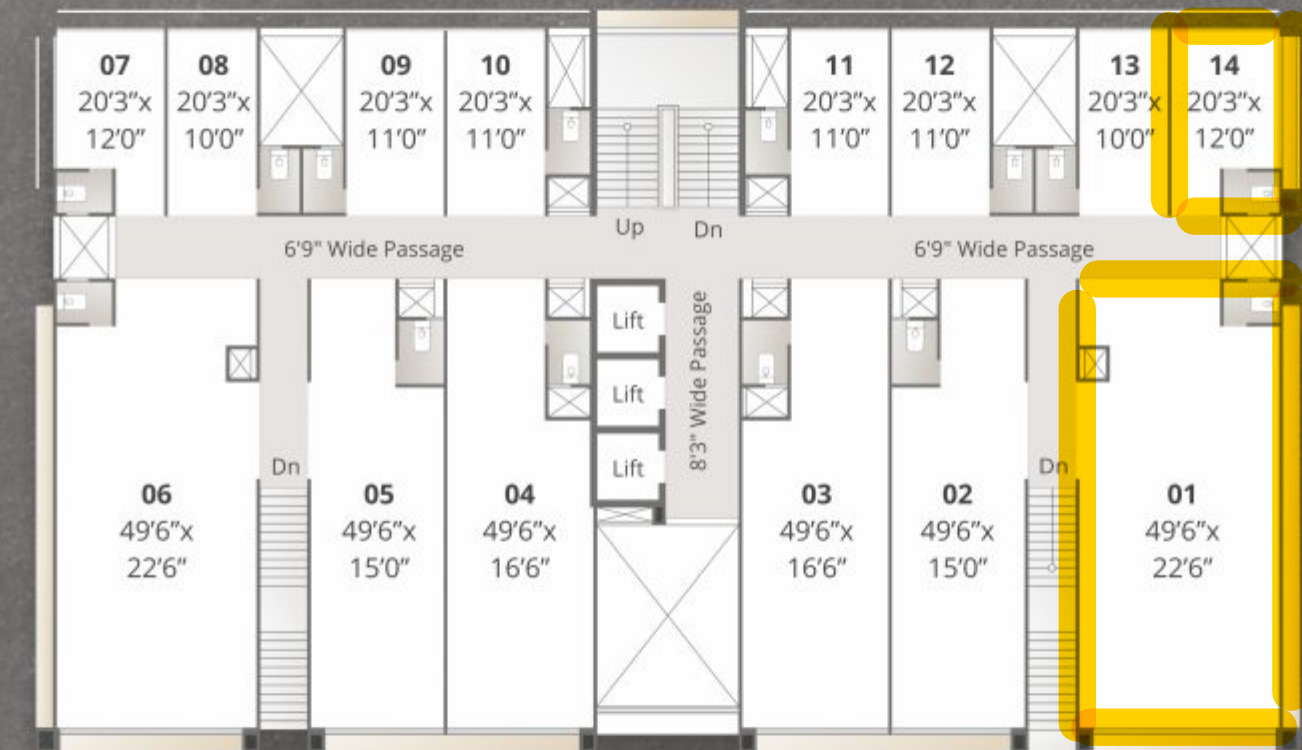
- Well planned OTS ducts for AC Outdoor units which helps Acs to work efficiently and makes it convenient to install and maintain.
- Cornered & separated space for pantry & washroom in each unit that allows one to plan the office layout efficiently and optimally.
- The ventilation of washrooms lies towards OTS ducts making all the passages and units pleasant & fresh.
- The well wrapped, OTS Ducts accommodates all Drain and Water Pipes, making it easy to repair & maintenance and also avoid leakages and other damages when property grows old.
- Centrally located Elevators & Staircases for easy excess to each Unit.
- Designated fire shaft at the Mid-Point of the Tower making it helpful in case of a fire emergency.



# GROUND FLOOR LAYOUT



# 1ST FLOOR LAYOUT



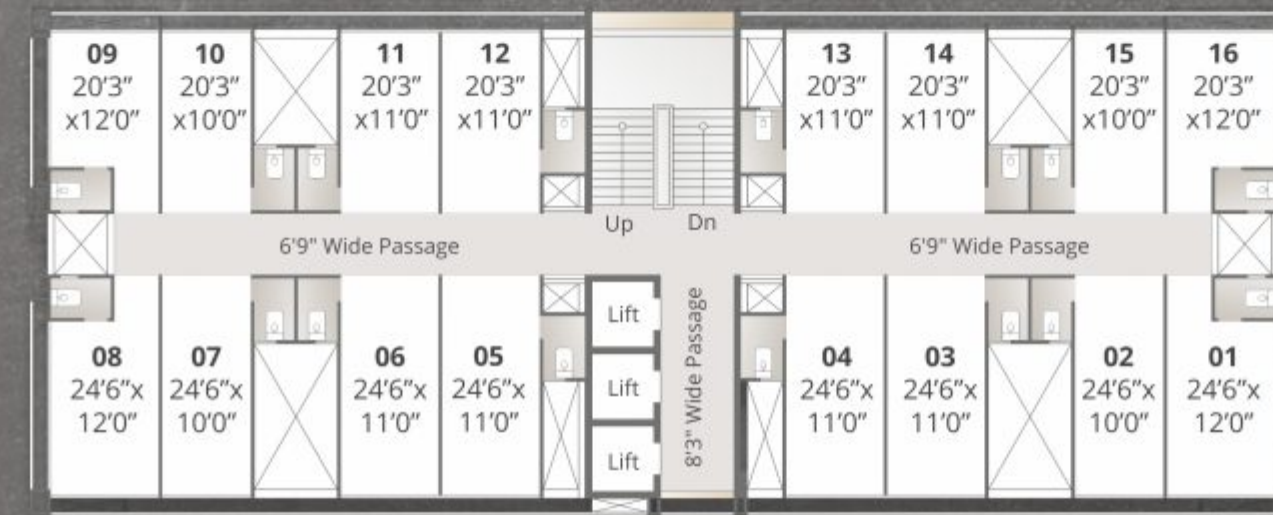


## 2ND FLOOR LAYOUT



1 8 M T W i d e R o a d

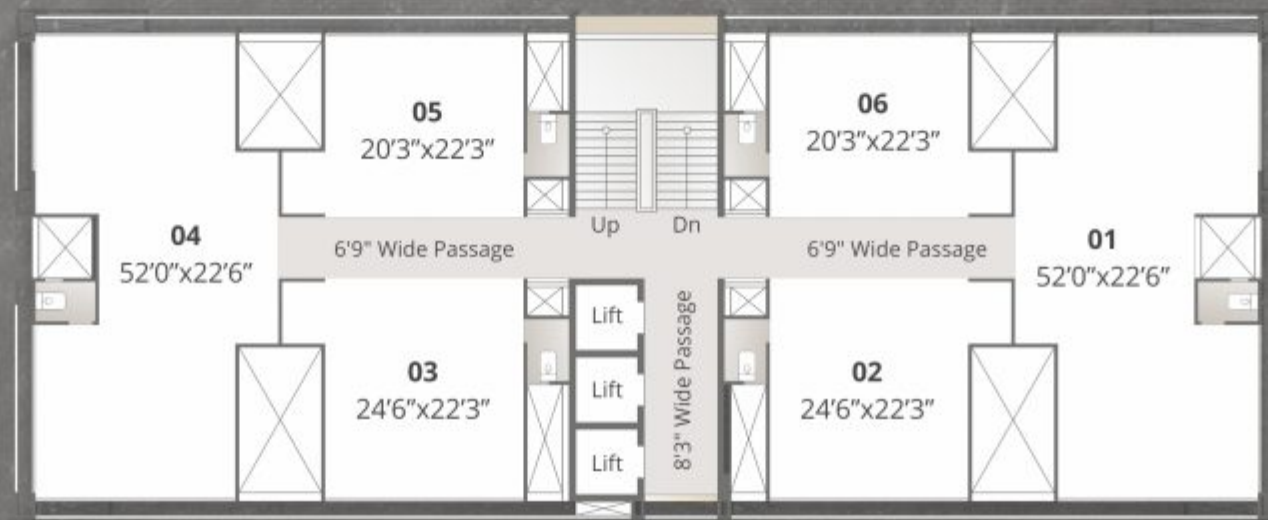
## 3RD TO 9TH FLOOR LAYOUT



1 8 M T W i d e R o a d

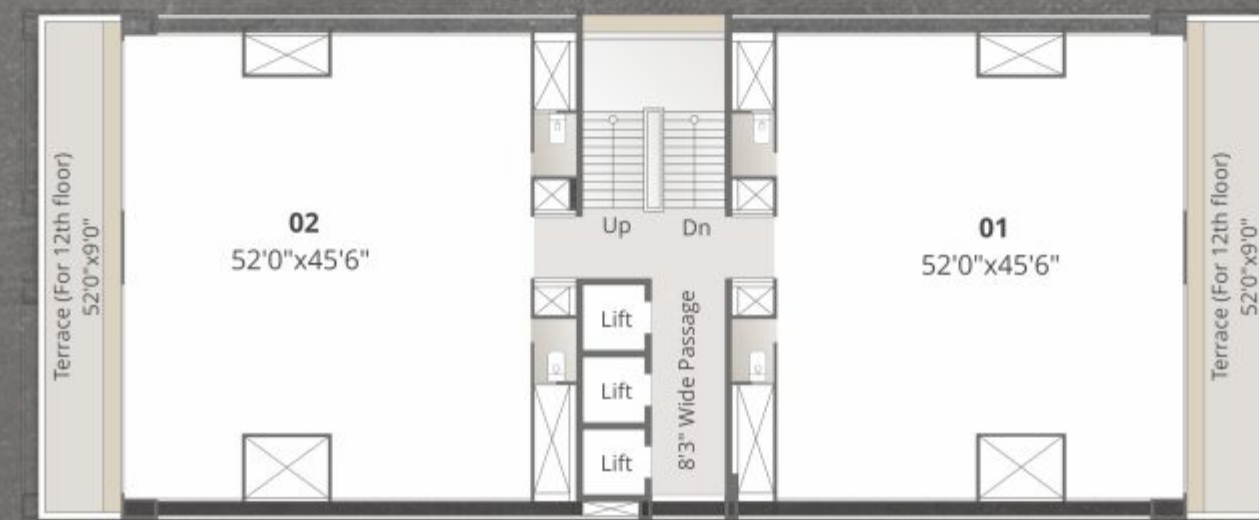


## 10TH & 11TH FLOOR LAYOUT



18 MT Wide Road

## 12TH & 13TH FLOOR LAYOUT



18 MT Wide Road





## WHAT PUSHES US TO DO BETTER ???

We at Vihav Group always think a step ahead. Encouraging fitness at workplace is what we want with the progressing corporate culture. Fitness in the workplace increases job satisfaction, reduce stress, cut health care costs, motivate employee, help in team building. To add cherry on the top, how about a corporate conference room for an executive meeting.







ONGOING PROJECTS

**vtc**  
VIHAV TRADE CENTER  
@ Vasna - Bhayli

**KEYSTONE MANSIONS**  
5B2HK LUXURY VILLAS  
@ Khanpur, Sevasi

**KEYSTONE MANSIONS II**  
5B2HK LUXURY VILLAS  
@ Khanpur, Sevasi

**EXCELUS**  
PREMIUM BUSINESS HUB  
@ Vasna - Bhayli

**VIHAV SKYONE**  
@ Vasna - Bhayli

**ELITE SQUARE**  
@ Sunpharma Road

**NSIGN**  
BUSINESS PLACE  
@ Gotri - Vasna